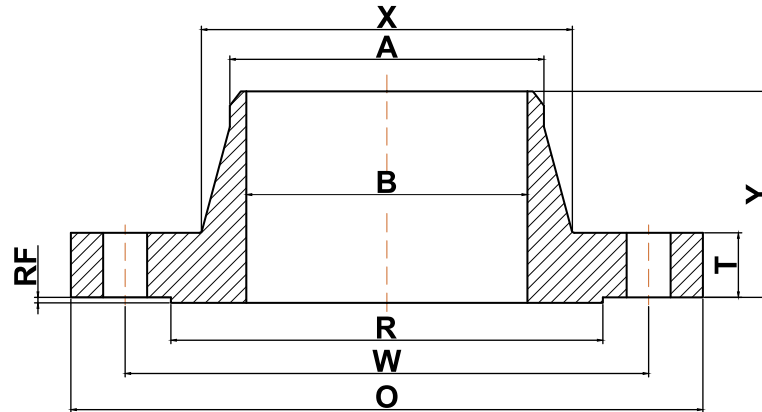




## ANSI b16.5

### ▶ Class 150 Welding Neck Flanges



Nominal Pipe Size	Outside Diameter (O)	Bolt Circle (W)	Raised Face Diameter (R)	Number of Holes	Diameter of Holes	Bore (B)	Point of Weld (A)	Hub Diameter (X)	Thickness (T)	Length Thru Hub (Y)	Approximate Weight (lbs)
1/2	3.50	2.38	1.38	4	0.62	0.62	0.84	1.19	0.38	1.81	2
3/4	3.88	2.75	1.69	4	0.62	0.82	1.05	1.50	0.44	2.00	2
1	4.25	3.12	2.00	4	0.62	1.05	1.32	1.94	0.50	2.12	3
1 1/4	4.62	3.50	2.50	4	0.62	1.38	1.66	2.31	0.56	2.19	3
1 1/2	5.00	3.88	2.88	4	0.62	1.61	1.90	2.56	0.62	2.38	4
2	6.00	4.75	3.62	4	0.75	2.07	2.38	3.06	0.69	2.44	6
2 1/2	7.00	5.50	4.12	4	0.75	2.47	2.88	3.56	0.81	2.69	8
3	7.50	6.00	5.00	4	0.75	3.07	3.50	4.25	0.88	2.69	10
3 1/2	8.50	7.00	5.50	8	0.75	3.55	4.00	4.81	0.88	2.75	12
4	9.00	7.50	6.19	8	0.75	4.03	4.50	5.31	0.88	2.94	15
5	10.00	8.50	7.31	8	0.88	5.05	5.56	6.44	0.88	3.44	19
6	11.00	9.50	8.50	8	0.88	6.07	6.63	7.56	0.94	3.44	24
8	13.50	11.75	10.62	8	0.88	7.98	8.63	9.69	1.06	3.94	39
10	16.00	14.25	12.75	12	1.00	10.02	10.75	12.00	1.12	3.94	52
12	19.00	17.00	15.00	12	1.00	12.00	12.75	14.38	1.19	4.44	80
14	21.00	18.75	16.25	12	1.12	13.25	14.00	15.75	1.31	4.94	110
16	23.50	21.25	18.50	16	1.12	15.25	16.00	18.00	1.38	4.94	140
18	25.00	22.75	21.00	16	1.25	17.25	18.00	19.88	1.50	5.44	150
20	27.50	25.00	23.00	20	1.25	19.25	20.00	22.00	1.62	5.62	180
22	29.50	27.25	25.25	20	1.38	21.25	22.00	24.00	1.75	5.82	225
24	32.00	29.50	27.25	20	1.38	23.25	24.00	26.12	1.81	5.94	260

(A) All dimensions are in inches

(B) These flanges will be furnished with a 1/16" raised face unless otherwise specified.

(C) Standard Bore will be furnished unless otherwise specified.