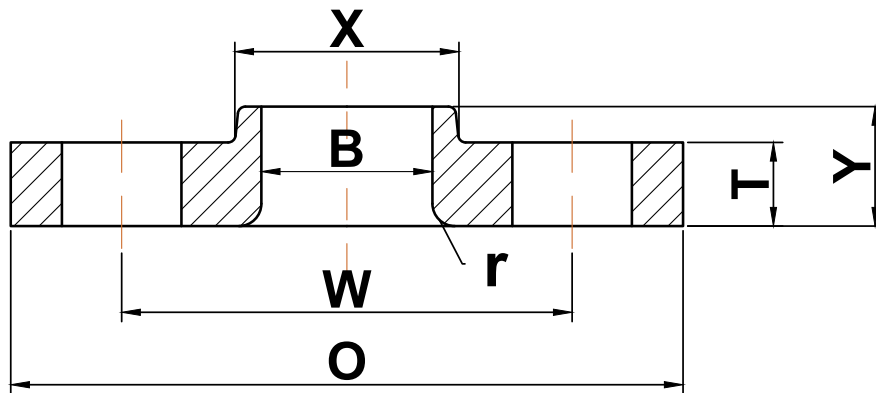




## ANSI b16.5

### ▶ Class 900 Lap Joint Flanges



Nominal Pipe Size	Outside Diameter (O)	Bolt Circle (W)	Radius (r)	Number of Holes	Diameter of Holes	Hub Diameter (X)	Bore (B)	Thickness (T)	Length Thru Hub (Y)	Approximate Weight (lbs)
1/2	4.75	3.25	0.12	4	0.88	1.50	0.90	0.88	1.25	4
3/4	5.12	3.50	0.12	4	0.88	1.75	1.11	1.00	1.38	5
1	5.88	4.00	0.12	4	1.00	2.06	1.38	1.12	1.62	8
1 1/4	6.25	4.38	0.19	4	1.00	2.50	1.72	1.12	1.62	9
1 1/2	7.00	4.88	0.25	4	1.13	2.75	1.97	1.25	1.75	12
2	8.50	6.50	0.31	8	1.00	4.12	2.46	1.50	2.25	25
2 1/2	9.62	7.50	0.31	8	1.13	4.88	2.97	1.62	2.50	35
3	9.50	7.50	0.38	8	1.00	5.00	3.60	1.50	2.12	25
4	11.50	9.25	0.44	8	1.25	6.25	4.60	1.75	2.75	51
5	13.75	11.00	0.50	8	1.38	7.50	5.69	2.00	3.12	81
6	15.00	12.50	0.50	12	1.25	9.25	6.75	2.19	3.38	105
8	18.50	15.50	0.50	12	1.50	11.75	8.75	2.50	4.50	190
10	21.50	18.50	0.50	16	1.50	14.50	10.92	2.75	5.00	275
12	24.00	21.00	0.50	20	1.50	16.50	12.92	3.12	5.62	370
14	25.25	22.00	0.50	20	1.63	17.75	14.18	3.38	6.12	415
16	27.75	24.25	0.50	20	1.75	20.00	16.19	3.50	6.50	465
18	31.00	27.00	0.50	20	2.00	22.25	18.20	4.00	7.50	650
20	33.75	29.50	0.50	20	2.13	24.50	20.25	4.25	8.25	810
24	41.00	35.50	0.50	20	2.63	29.50	24.25	5.50	10.50	1550

(a) All dimensions are in inches