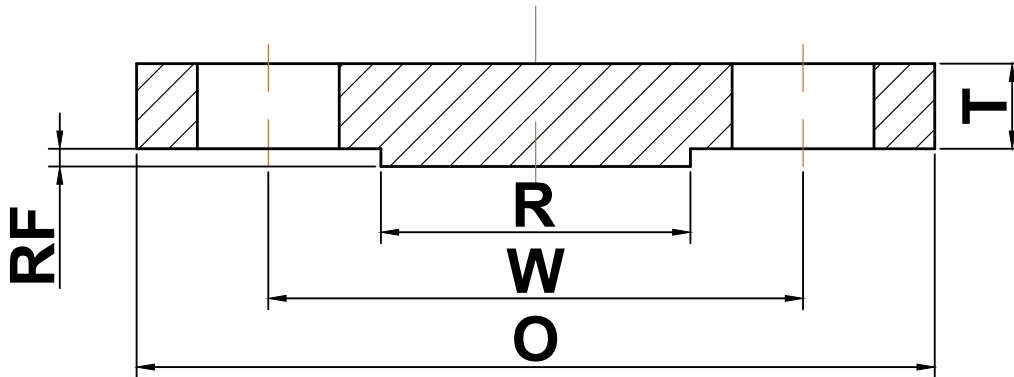




ANSI b16.5

▶ Class 900 Blind Flanges



Nominal Pipe Size	Outside Diameter (O)	Bolt Circle (W)	Raised Face Diameter (R)	Number of Holes	Diameter of Holes	Thickness (T)	Approximate Weight (lbs)
1/2	4.75	3.25	1.38	4	0.88	0.88	4
3/4	5.12	3.50	1.69	4	0.88	1.00	6
1	5.88	4.00	2.00	4	1.00	1.12	8
1 1/4	6.25	4.38	2.50	4	1.00	1.12	9
1 1/2	7.00	4.88	2.88	4	1.13	1.25	13
2	8.50	6.50	3.62	8	1.00	1.50	25
2 1/2	9.62	7.50	4.12	8	1.13	1.62	35
3	9.50	7.50	5.00	8	1.00	1.50	29
4	11.50	9.25	6.19	8	1.25	1.75	54
5	13.75	11.00	7.31	8	1.38	2.00	87
6	15.00	12.50	8.50	12	1.25	2.19	115
8	18.50	15.50	10.62	12	1.50	2.50	200
10	21.50	18.50	12.75	16	1.50	2.75	290
12	24.00	21.00	15.00	20	1.50	3.12	415
14	25.25	22.00	16.25	20	1.63	3.38	520
16	27.75	24.25	18.50	20	1.75	3.50	600
18	31.00	27.00	21.00	20	2.00	4.00	850
20	33.75	29.50	23.00	20	2.13	4.25	1075
24	41.00	35.50	27.25	20	2.63	5.50	2025

(a) All dimensions are in inches

(b) These flanges will be furnished with a 1/4" raised face unless otherwise specified.