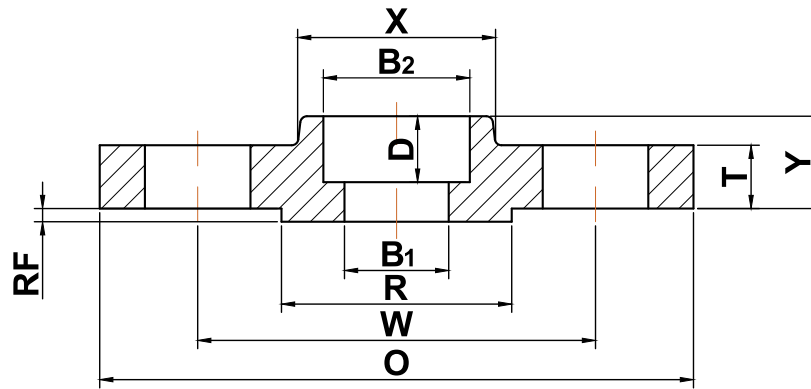




ANSI b16.5

▶ Class 600 Socket-Weld Flanges



Nominal Pipe Size	Outside Diameter (O)	Bolt Circle (W)	Raised Face Diameter (R)	Number of Holes	Diameter of Holes	Hub Diameter (X)	Bore (B1)	Bore (B2)	Depth of Socket (D)	Thickness (T)	Length Thru Hub (Y)	Approximate Weight (lbs)
1/2	3.75	2.62	1.38	4	0.63	1.50	Specified by Purchaser	0.88	0.38	0.56	0.88	2
3/4	4.62	3.25	1.69	4	0.75	1.88	Specified by Purchaser	1.09	0.44	0.62	1.00	3
1	4.88	3.50	2.00	4	0.75	2.12	Specified by Purchaser	1.36	0.50	0.69	1.06	4
1 1/4	5.25	3.88	2.50	4	0.75	2.50	Specified by Purchaser	1.70	0.56	0.81	1.12	5
1 1/2	6.12	4.50	2.88	4	0.88	2.75	Specified by Purchaser	1.95	0.62	0.88	1.25	7
2	6.50	5.00	3.62	8	0.75	3.31	Specified by Purchaser	2.44	0.69	1.00	1.44	9
2 1/2	7.50	5.88	4.12	8	0.88	3.94	Specified by Purchaser	2.94	0.75	1.12	1.62	13
3	8.25	6.62	5.00	8	0.88	4.62	Specified by Purchaser	3.57	0.81	1.25	1.81	16

(a) All dimensions are in inches

(b) These flanges will be furnished with a 1/4" raised face unless otherwise specified.