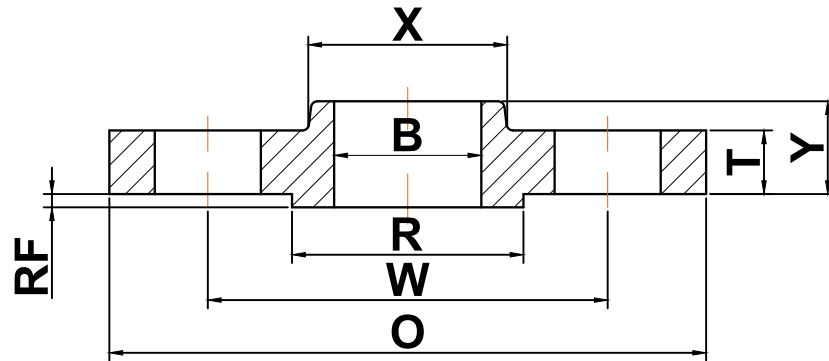




ANSI b16.5

▶ Class 400 Slip-On Flanges



Nominal Pipe Size	Outside Diameter (O)	Bolt Circle (W)	Raised Face Diameter (R)	Number of Holes	Diameter of Holes	Bore (B)	Hub Diameter (X)	Thickness (T)	Length Thru Hub (Y)	Approximate Weight (lbs)
1/2	3.75	2.62	1.38	4	0.63	0.88	1.50	0.56	0.88	2
3/4	4.62	3.25	1.69	4	0.75	1.09	1.88	0.62	1.00	3
1	4.88	3.50	2.00	4	0.75	1.36	2.12	0.69	1.06	4
1 1/4	5.25	3.88	2.50	4	0.75	1.70	2.50	0.81	1.12	5
1 1/2	6.12	4.50	2.88	4	0.88	1.95	2.75	0.88	1.25	7
2	6.50	5.00	3.62	8	0.75	2.44	3.31	1.00	1.44	9
2 1/2	7.50	5.88	4.12	8	0.88	2.94	3.94	1.12	1.62	13
3	8.25	6.62	5.00	8	0.88	3.57	4.62	1.25	1.81	16
3 1/2	9.00	7.25	5.50	8	1.00	4.07	5.25	1.38	1.94	21
4	10.00	7.88	6.19	8	1.00	4.57	5.75	1.38	2.00	26
5	11.00	9.25	7.31	8	1.00	5.66	7.00	1.50	2.12	31
6	12.50	10.62	8.50	12	1.00	6.72	8.12	1.62	2.25	44
8	15.00	13.00	10.62	12	1.13	8.72	10.25	1.88	2.69	67
10	17.50	15.25	12.75	16	1.25	10.88	12.62	2.12	2.88	91
12	20.50	17.75	15.00	16	1.38	12.88	14.75	2.25	3.12	130
14	23.00	20.25	16.25	20	1.38	14.14	16.75	2.38	3.31	180
16	25.50	22.50	18.50	20	1.50	16.16	19.00	2.50	3.69	235
18	28.00	24.75	21.00	24	1.50	18.18	21.00	2.62	3.88	285
20	30.50	27.00	23.00	24	1.63	20.20	23.13	2.75	4.00	345
22	33.00	29.25	25.25	24	1.75	22.22	25.25	2.88	4.25	405
24	36.00	32.00	27.25	24	1.88	24.25	27.62	3.00	4.50	510

(a) All dimensions are in inches

(b) These flanges will be furnished with a 1/4" raised face unless otherwise specified.