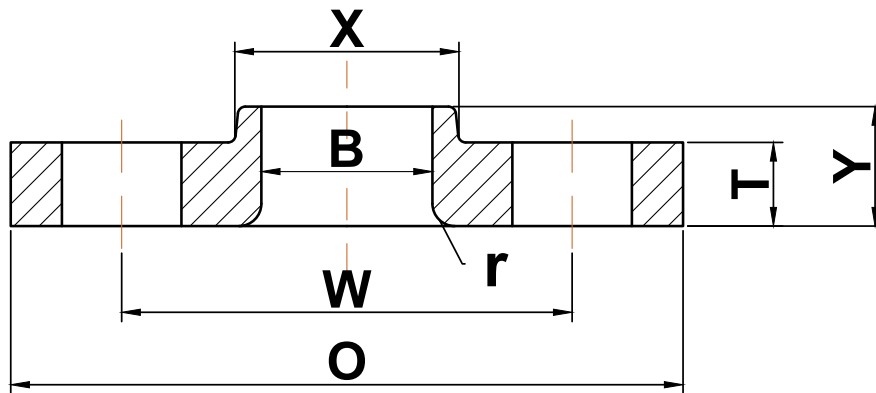




## ANSI b16.5

### ▶ Class 400 Lap Joint Flanges



Nominal Pipe Size	Outside Diameter (O)	Bolt Circle (W)	Radius (r)	Number of Holes	Diameter of Holes	Hub Diameter (X)	Bore (B)	Thickness (T)	Length Thru Hub (Y)	Approximate Weight (lbs)
1/2	3.75	2.62	0.12	4	0.63	1.50	0.90	0.56	0.88	2
3/4	4.62	3.25	0.12	4	0.75	1.88	1.11	0.62	1.00	3
1	4.88	3.50	0.12	4	0.75	2.12	1.38	0.69	1.06	4
1 1/4	5.25	3.88	0.19	4	0.75	2.50	1.72	0.81	1.12	5
1 1/2	6.12	4.50	0.25	4	0.88	2.75	1.97	0.88	1.25	7
2	6.50	5.00	0.31	8	0.75	3.31	2.46	1.00	1.44	9
2 1/2	7.50	5.88	0.31	8	0.88	3.94	2.97	1.12	1.62	12
3	8.25	6.62	0.38	8	0.88	4.62	3.60	1.25	1.81	15
3 1/2	9.00	7.25	0.38	8	1.00	5.25	4.10	1.38	1.94	20
4	10.00	7.88	0.44	8	1.00	5.75	4.60	1.38	2.00	25
5	11.00	9.25	0.44	8	1.00	7.00	5.69	1.50	2.12	29
6	12.50	10.62	0.50	12	1.00	8.12	6.75	1.62	2.25	42
8	15.00	13.00	0.50	12	1.13	10.25	8.75	1.88	2.69	64
10	17.50	15.25	0.50	16	1.25	12.62	10.92	2.12	4.00	110
12	20.50	17.75	0.50	16	1.38	14.75	12.92	2.25	4.25	150
14	23.00	20.25	0.50	20	1.38	16.75	14.18	2.38	4.62	205
16	25.50	22.50	0.50	20	1.50	19.00	16.19	2.50	5.00	260
18	28.00	24.75	0.50	24	1.50	21.00	18.20	2.62	5.38	315
20	30.50	27.00	0.50	24	1.63	23.13	20.25	2.75	5.75	385
22	33.00	29.25	0.50	24	1.75	25.25	22.25	2.88	6.00	455
24	36.00	32.00	0.50	24	1.88	27.62	24.25	3.00	6.25	570

(a) All dimensions are in inches