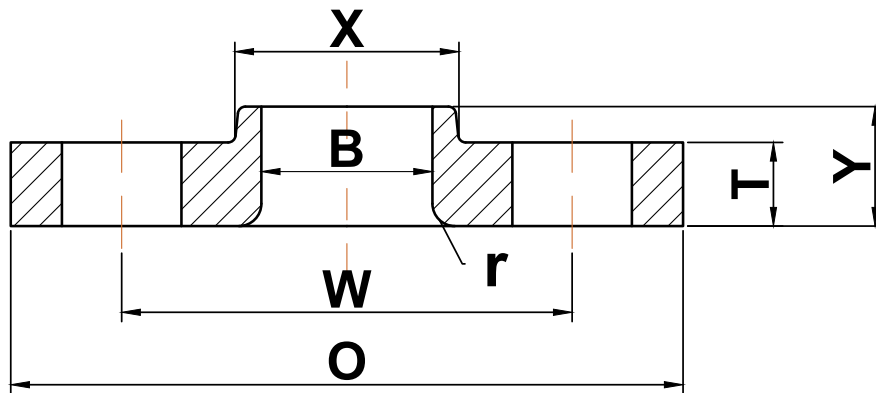




ANSI b16.5

▶ Class 300 Lap Joint Flanges



Nominal Pipe Size	Outside Diameter (O)	Bolt Circle (W)	Radius (r)	Number of Holes	Diameter of Holes	Hub Diameter (X)	Bore (B)	Thickness (T)	Length Thru Hub (Y)	Approximate Weight (lbs)
1/2	3.75	2.62	0.12	4	0.63	1.50	0.90	0.56	0.88	2
3/4	4.62	3.25	0.12	4	0.75	1.88	1.11	0.62	1.00	3
1	4.88	3.50	0.12	4	0.75	2.12	1.38	0.69	1.06	3
1 1/4	5.25	3.88	0.19	4	0.75	2.50	1.72	0.75	1.06	4
1 1/2	6.12	4.50	0.25	4	0.88	2.75	1.97	0.81	1.19	6
2	6.50	5.00	0.31	8	0.75	3.31	2.46	0.88	1.31	7
2 1/2	7.50	5.88	0.31	8	0.88	3.94	2.97	1.00	1.50	10
3	8.25	6.62	0.38	8	0.88	4.62	3.60	1.12	1.69	13
3 1/2	9.00	7.25	0.38	8	0.88	5.25	4.10	1.19	1.75	17
4	10.00	7.88	0.44	8	0.88	5.75	4.60	1.25	1.88	22
5	11.00	9.25	0.44	8	0.88	7.00	5.69	1.38	2.00	28
6	12.50	10.62	0.50	12	0.88	8.12	6.75	1.44	2.06	39
8	15.00	13.00	0.50	12	1.00	10.25	8.75	1.62	2.44	58
10	17.50	15.25	0.50	16	1.13	12.62	10.92	1.88	3.75	91
12	20.50	17.75	0.50	16	1.25	14.75	12.92	2.00	4.00	140
14	23.00	20.25	0.50	20	1.25	16.75	14.18	2.12	4.38	190
16	25.50	22.50	0.50	20	1.38	19.00	16.19	2.25	4.75	250
18	28.00	24.75	0.50	24	1.38	21.00	18.20	2.38	5.12	295
20	30.50	27.00	0.50	24	1.38	23.12	20.25	2.50	5.50	370
22	33.00	29.25	0.50	24	1.63	25.25	22.25	2.62	5.69	435
24	36.00	32.00	0.50	24	1.63	27.62	24.25	2.75	6.00	550

(a) All dimensions are in inches