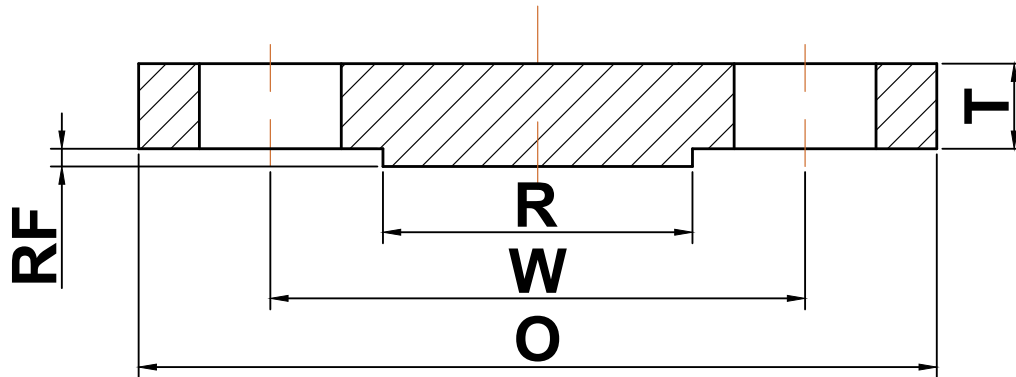




## ANSI b16.5

### ▶ Class 300 Blind Flanges



Nominal Pipe Size	Outside Diameter (O)	Bolt Circle (W)	Raised Face Diameter (R)	Number of Holes	Diameter of Holes	Thickness (T)	Approximate Weight (lbs)
1/2	3.75	2.62	1.38	4	0.63	0.50	2
3/4	4.62	3.25	1.69	4	0.75	0.56	3
1	4.88	3.50	2.00	4	0.75	0.62	3
1 1/4	5.25	3.88	2.50	4	0.75	0.69	4
1 1/2	6.12	4.50	2.88	4	0.88	0.75	6
2	6.50	5.00	3.62	8	0.75	0.81	8
2 1/2	7.50	5.88	4.12	8	0.88	0.94	12
3	8.25	6.62	5.00	8	0.88	1.06	16
3 1/2	9.00	7.25	5.50	8	0.88	1.12	21
4	10.00	7.88	6.19	8	0.88	1.19	27
5	11.00	9.25	7.31	8	0.88	1.31	35
6	12.50	10.62	8.50	12	0.88	1.38	50
8	15.00	13.00	10.62	12	1.00	1.56	81
10	17.50	15.25	12.75	16	1.13	1.81	124
12	20.50	17.75	15.00	16	1.25	1.94	185
14	23.00	20.25	16.25	20	1.25	2.06	250
16	25.50	22.50	18.50	20	1.38	2.19	295
18	28.00	24.75	21.00	24	1.38	2.31	395
20	30.50	27.00	23.00	24	1.38	2.44	505
22	33.00	29.25	25.25	24	1.63	2.56	640
24	36.00	32.00	27.25	24	1.63	2.69	790

(a) All dimensions are in inches

(b) These flanges will be furnished with a 1/16" raised face unless otherwise specified.