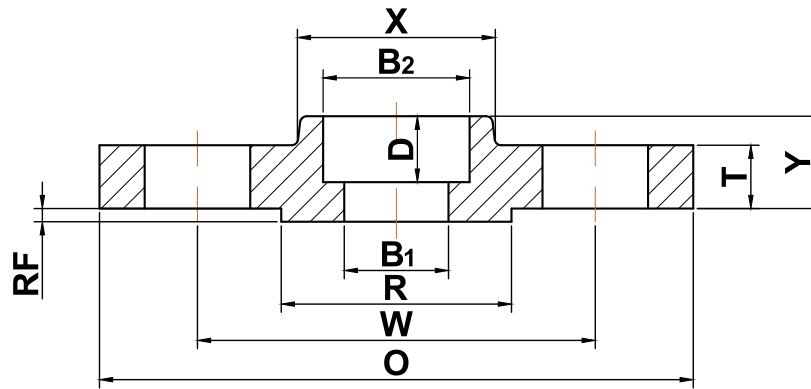




ANSI b16.5

▶ Class 1500 Socket-Weld Flanges



| Nominal Pipe Size | Outside Diameter (O) | Bolt Circle (W) | Raised Face Diameter (R) | Number of Holes | Diameter of Holes | Hub Diameter (X) | Bore (B1) | Bore (B2) | Depth of Socket (D) | Thickness (T) | Length Thru Hub (Y) | Approximate Weight (lbs) |
|-------------------|----------------------|-----------------|--------------------------|-----------------|-------------------|------------------|------------------------|-----------|---------------------|---------------|---------------------|--------------------------|
| 1/2 | 4.75 | 3.25 | 1.38 | 4 | 0.88 | 1.50 | Specified by Purchaser | 0.88 | 0.38 | 0.88 | 1.25 | 4 |
| 3/4 | 5.12 | 3.50 | 1.69 | 4 | 0.88 | 1.75 | Specified by Purchaser | 1.09 | 0.44 | 1.00 | 1.38 | 5 |
| 1 | 5.88 | 4.00 | 2.00 | 4 | 1.00 | 2.06 | Specified by Purchaser | 1.36 | 0.50 | 1.12 | 1.62 | 8 |
| 1 1/4 | 6.25 | 4.38 | 2.50 | 4 | 1.00 | 2.50 | Specified by Purchaser | 1.70 | 0.56 | 1.12 | 1.62 | 9 |
| 1 1/2 | 7.00 | 4.88 | 2.88 | 4 | 1.13 | 2.75 | Specified by Purchaser | 1.95 | 0.62 | 1.25 | 1.75 | 12 |
| 2 | 8.50 | 6.50 | 3.62 | 8 | 1.00 | 4.12 | Specified by Purchaser | 2.44 | 0.69 | 1.50 | 2.25 | 25 |
| 2 1/2 | 9.62 | 7.50 | 4.12 | 8 | 1.13 | 4.88 | Specified by Purchaser | 2.94 | 0.75 | 1.62 | 2.50 | 36 |

(a) All dimensions are in inches

(b) These flanges will be furnished with a 1/4" raised face unless otherwise specified.