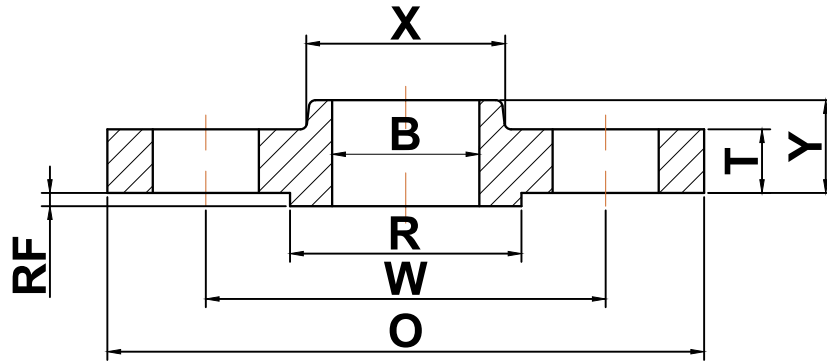




ANSI b16.5

▶ Class 150 Slip-On Flanges



Nominal Pipe Size	Outside Diameter (O)	Bolt Circle (W)	Raised Face Diameter (R)	Number of Holes	Diameter of Holes	Bore (B)	Hub Diameter (X)	Thickness (T)	Length Thru Hub (Y)	Approximate Weight (lbs)
1/2	3.50	2.38	1.38	4	0.62	0.88	1.19	0.38	0.56	1
3/4	3.88	2.75	1.69	4	0.62	1.09	1.50	0.44	0.56	2
1	4.25	3.12	2.00	4	0.62	1.36	1.94	0.50	0.62	2
1 1/4	4.62	3.50	2.50	4	0.62	1.70	2.31	0.56	0.75	3
1 1/2	5.00	3.88	2.88	4	0.62	1.95	2.56	0.62	0.81	3
2	6.00	4.75	3.62	4	0.75	2.44	3.06	0.69	0.94	5
2 1/2	7.00	5.50	4.12	4	0.75	2.94	3.56	0.81	1.06	7
3	7.50	6.00	5.00	4	0.75	3.57	4.25	0.88	1.12	8
3 1/2	8.50	7.00	5.50	8	0.75	4.07	4.81	0.88	1.19	11
4	9.00	7.50	6.19	8	0.75	4.57	5.31	0.88	1.25	13
5	10.00	8.50	7.31	8	0.88	5.66	6.44	0.88	1.38	15
6	11.00	9.50	8.50	8	0.88	6.72	7.56	0.94	1.50	19
8	13.50	11.75	10.62	8	0.88	8.72	9.69	1.06	1.69	30
10	16.00	14.25	12.75	12	1.00	10.88	12.00	1.12	1.88	43
12	19.00	17.00	15.00	12	1.00	12.88	14.38	1.19	2.12	64
14	21.00	18.75	16.25	12	1.12	14.14	15.75	1.31	2.19	90
16	23.50	21.25	18.50	16	1.12	16.16	18.00	1.38	2.44	98
18	25.00	22.75	21.00	16	1.25	18.18	19.88	1.50	2.62	130
20	27.50	25.00	23.00	20	1.25	20.20	22.00	1.62	2.81	165
22	29.50	27.25	25.25	20	1.38	22.22	24.00	1.75	3.06	185
24	32.00	29.50	27.25	20	1.38	24.25	26.12	1.81	3.19	220

(a) All dimensions are in inches

(b) These flanges will be furnished with a 1/16" raised face unless otherwise specified.