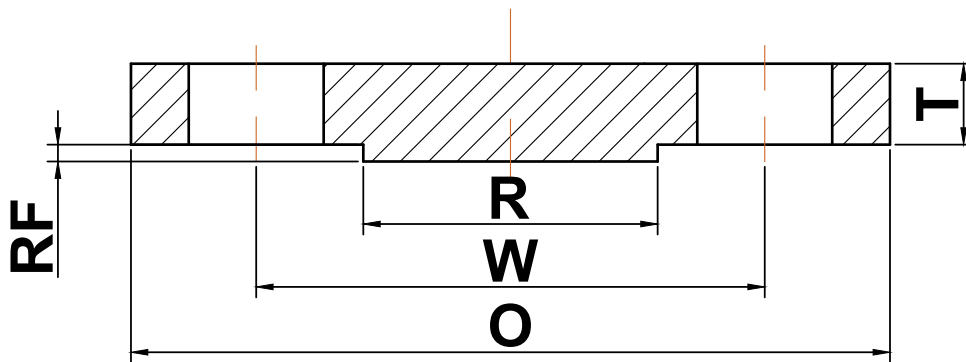


## ASME B16.47 series A flange

### ▶ Class 150 Blind Flanges



Nominal Pipe Size	Outside Diameter (O)	Bolt Circle (W)	Raised Face Diameter (R)	Number of Holes	Diameter of Holes	Minimum Thickness (T)	Approximate Weight (lbs)
26	34.25	31.75	29.50	24	1.38	2.69	702
28	36.50	34.00	31.50	28	1.38	2.81	833
30	38.75	36.00	33.75	28	1.38	2.94	982
32	41.75	38.50	36.00	28	1.62	3.19	1238
34	43.75	40.50	38.00	32	1.62	3.25	1384
36	46.00	42.75	40.25	32	1.62	3.56	1676
38	48.75	45.25	42.25	32	1.62	3.44	1819
40	50.75	47.25	44.25	36	1.62	3.56	2040
42	53.00	49.50	47.00	36	1.62	3.81	2380
44	55.25	51.75	49.00	40	1.62	4.00	2715
46	57.25	53.75	51.00	40	1.62	4.06	2961
48	59.50	56.00	53.50	44	1.62	4.25	3350
50	61.75	58.25	55.50	44	1.88	4.38	3716
52	64.00	60.50	57.50	44	1.88	4.56	4156
54	66.25	62.75	59.50	44	1.88	4.75	4639
56	68.75	65.00	62.00	48	1.88	4.88	5130
58	71.00	67.25	64.00	48	1.88	5.06	5675
60	73.00	69.25	66.00	52	1.88	5.19	6155

(a) All dimensions are in inches

(b) These flanges will be furnished with a 1/16" raised face unless otherwise specified.