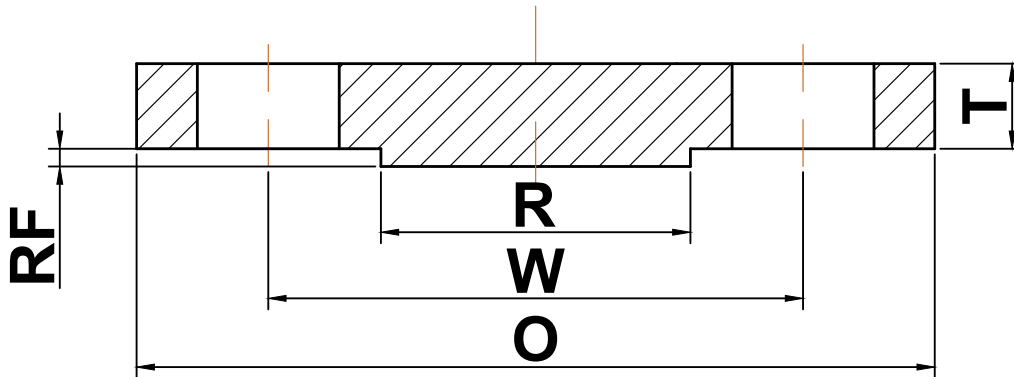




ANSI b16.5

▶ Class 150 Blind Flanges



Nominal Pipe Size	Outside Diameter (O)	Bolt Circle (W)	Raised Face Diameter (R)	Number of Holes	Diameter of Holes	Thickness (T)	Approximate Weight (lbs)
1/2	3.50	2.38	1.38	4	0.62	0.38	1
3/4	3.88	2.75	1.69	4	0.62	0.44	2
1	4.25	3.12	2.00	4	0.62	0.50	2
1 1/4	4.62	3.50	2.50	4	0.62	0.56	3
1 1/2	5.00	3.88	2.88	4	0.62	0.62	4
2	6.00	4.75	3.62	4	0.75	0.69	5
2 1/2	7.00	5.50	4.12	4	0.75	0.81	7
3	7.50	6.00	5.00	4	0.75	0.88	9
3 1/2	8.50	7.00	5.50	8	0.75	0.88	13
4	9.00	7.50	6.19	8	0.75	0.88	17
5	10.00	8.50	7.31	8	0.88	0.88	20
6	11.00	9.50	8.50	8	0.88	0.94	26
8	13.50	11.75	10.62	8	0.88	1.06	45
10	16.00	14.25	12.75	12	1.00	1.12	70
12	19.00	17.00	15.00	12	1.00	1.19	110
14	21.00	18.75	16.25	12	1.12	1.31	140
16	23.50	21.25	18.50	16	1.12	1.38	180
18	25.00	22.75	21.00	16	1.25	1.50	220
20	27.50	25.00	23.00	20	1.25	1.62	285
22	29.50	27.25	25.25	20	1.38	1.75	355
24	32.00	29.50	27.25	20	1.38	1.81	430

(a) All dimensions are in inches

(b) These flanges will be furnished with a 1/16" raised face unless otherwise specified.